

MALDIVES LEGEND



MALDIVES LEGEND: INFO - SHEET



OUR FLEET: SEA PLEASURE

Introduction to Sea Pleasure



LENGTH: 30 METERS



CABINS: 10



PAX: 20



SPEED: 14 KN

The Maldives Legend - Sea Pleasure is a liveaboard that has been designed beautifully and furnished luxuriously, catering to the needs of elite customers. With a total of 10 cabins, it can accommodate up to 20 passengers. The liveaboard has four Seaview Cabins on the upper deck, each with a private balcony. Two cabins can be set up as twin or double rooms. On the lower deck are two standard twin cabins at the front, three family cabins with a double bed and a single bed, and one cabin with a double bed. All cabins are air-conditioned with en suite shower and toilet facilities, while the upper deck cabins come equipped with a minibar.

SPECIFICATIONS

- **Vessel** - Wooden hull (Balau and Kempes timber finely polished with fiberglass coating)
- **Built Year** - 2020
- **Propulsion** - Main: Daewoo 640 HP
- **Fuel Capacity** - 12,000 litres
- **Desalinator** - 20 ton and 10 ton plants with 11,500 litres of fresh water per day.
- **Navigation & Communication** - Sounder, Compass, Map, Fish Finder, GPS, CB Radio, Mobile Phones, Internet, Search Light, Binoculars, IDD Telephone.
- **Power** - 2 x 70 KW Cummins Generators

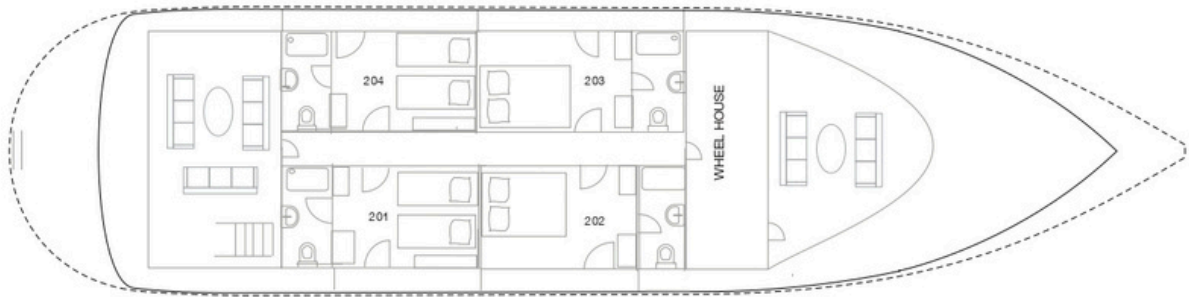
FACILITIES

The yacht is equipped with a jacuzzi bar on the sun deck. The sun deck further has sun lounges. The spacious saloon and the restaurant in the main deck consists of an expansive area as a lounge, restaurant serving multicuisine and a bar serving cocktails, beer, wine and imported liquor. The luxuriously designed yacht also has exterior areas for dining and relaxation on the main deck. The Liveaboard comes together with two tenders

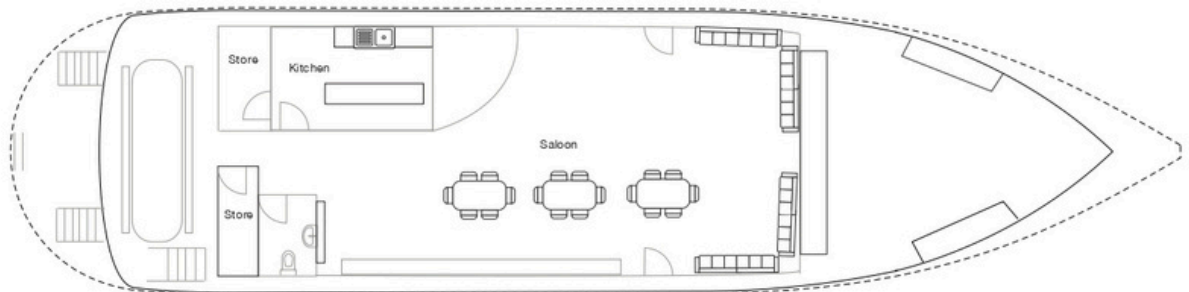
SEA PLEASURE : BOAT LAYOUT

Attached below is the deck layout of Maldives Legend - Sea Pleasure

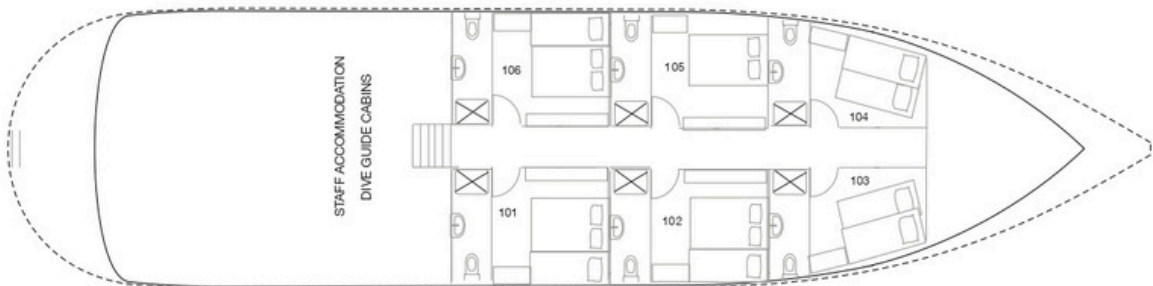
[Click here to access the PDF version.](#)



TOP DECK



MAIN DECK

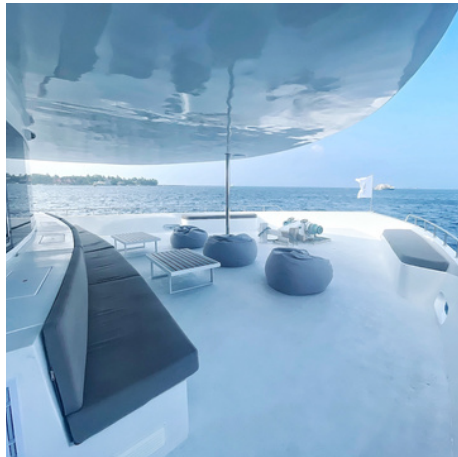
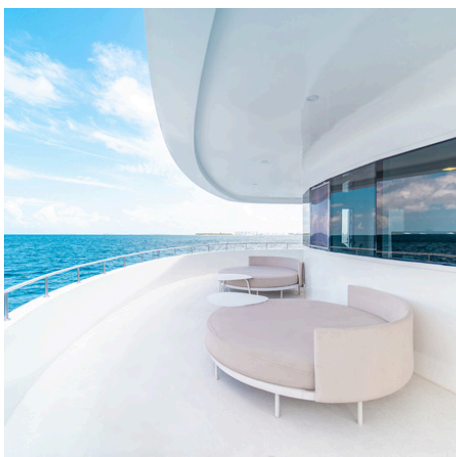
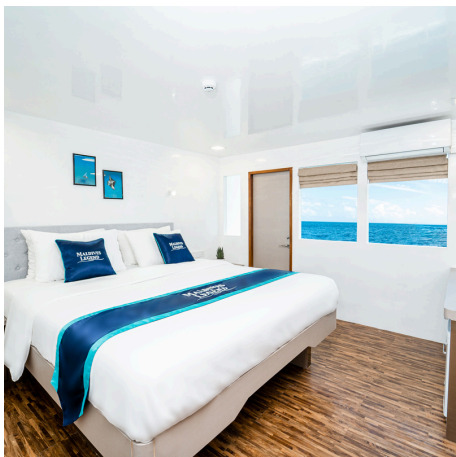


LOWER DECK

SEA PLEASURE : BOAT GALLERY

Capture the essence of our magnificent Sea Pleasure boat through a few stunning pictures

[Click here to access the complete gallery.](#)





OUR FLEET: ODYSSEY

Introduction to Odyssey



LENGTH: 30 METERS



CABINS: 11



PAX: 22



SPEED: 12 KN

The Maldives Legend - Odyssey is a luxurious liveaboard that was built in 2022 and features modern decor and interiors. It has a total of 11 cabins that can accommodate up to 22 passengers. The upper deck comprises of 4 Seaview Cabins, 2 of which have queen beds and the other 2 have single twin beds. The lower deck consists of 4 Family Cabins, each with a double bed and a single bed, and 2 Standard Cabins with twin beds. The main deck includes a tour leader cabin with a bunk bed and a sea view. All cabins have air conditioning and come with an en suite shower (with hot and cold water) and toilet facilities.

SPECIFICATIONS

- **Vessel** - Full Fiber
- **Built Year** - 2022
- **Propulsion** - Main: Doosan 360
- **Fuel Capacity** - 7000 litres
- **Desalinator** - 6000 litres of fresh water per day.
- **Navigation & Communication** - 36 miles marine radar system, Eco Sounder, Compass, Map, Fish Finder, GPS, CB Radio, Mobile Phones, Internet, Search Light, Binoculars, IDD Telephone.

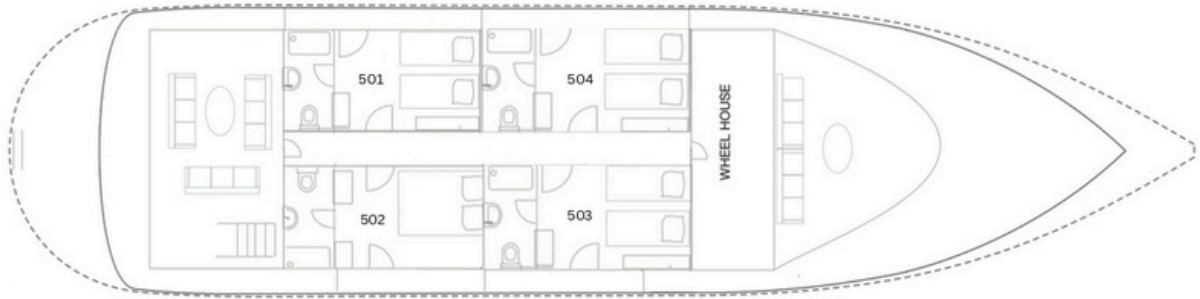
FACILITIES

The liveaboard comprises of a roomy saloon area and a restaurant, both furnished with modern wooden furniture. There are ample exterior relaxation areas, including one at the back of the main deck, one at the front of the main deck, and one at the back of the upper deck. Additionally, the liveaboard has a spacious sun deck that comes equipped with a Jacuzzi.

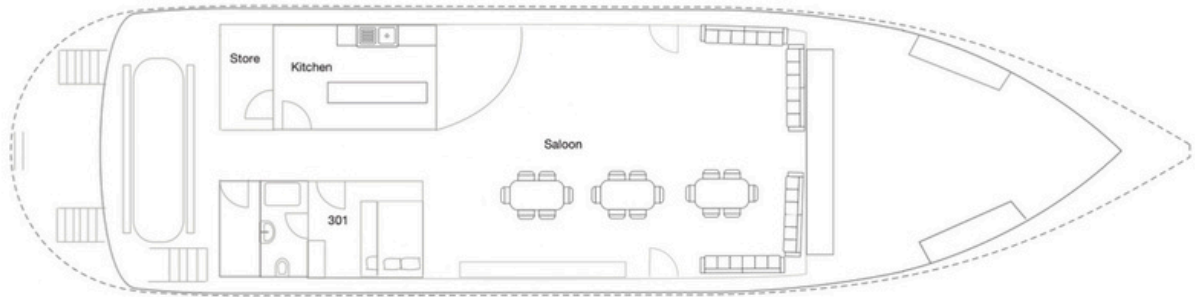
ODYSSEY : BOAT LAYOUT

Attached below is the deck layout of Maldives Legend - Odyssey

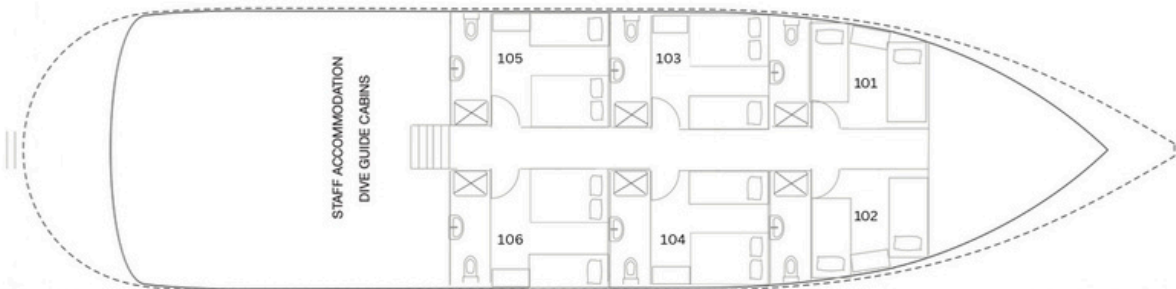
[Click here to access the PDF version.](#)



TOP DECK



MAIN DECK



LOWER DECK

ODYSSEY : BOAT GALLERY

Capture the essence of our luxurious Odyssey boat through a few stunning pictures

[Click here to access the complete gallery.](#)





OUR FLEET: ZEN

Introduction to Zen



LENGTH: 41 METERS



CABINS: 13



PAX: 24



SPEED: 10 KN

The Maldives Legend Zen is a spacious and luxurious liveaboard designed to offer an unforgettable experience in the pristine waters of the Maldives. It features a total of 13 guest cabins, thoughtfully arranged to cater to different preferences and needs. On the upper deck, guests can enjoy stunning views from the Seaview Suite and three Seaview Cabins. The lower deck includes variety accommodation options which includes, 1 Junior Suite, 2 Double Cabins, 4 Twin Cabins that can be converted into double beds and 2 Single Cabins. Each cabin is designed with modern amenities and tasteful décor, ensuring a comfortable and relaxing stay for all guests.

SPECIFICATIONS

- **Vessel** - Wooden hull polished with fiberglass coating
- **Built Year** - 2024 (Refurbished)
- **Propulsion** - Main: Yanmar 650 HP
- **Fuel Capacity** - 10000 litres
- **Desalinator** - 12000 litres of fresh water per day.
- **Navigation & Communication** - 36 miles marine radar system, Eco Sounder, Compass, Map, Fish Finder, GPS, CB Radio, Mobile Phones, Internet, Search Light, Binoculars, IDD Telephone.

FACILITIES

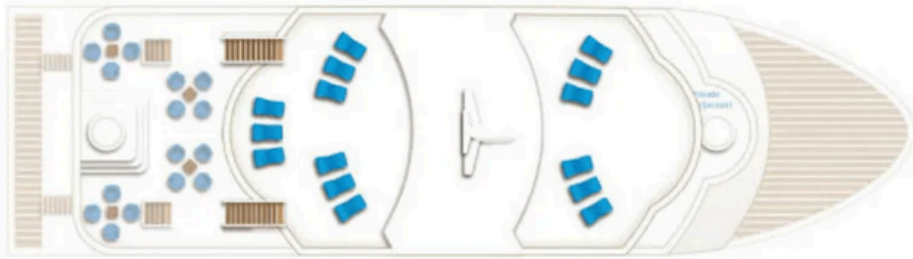
This expansive and comfortable liveaboard features a restaurant and bar on the main deck, a cozy lounge in the saloon area, and multiple relaxation spots both at the front and back. The upper deck boasts a jacuzzi, additional bar and lounge at the rear, and another relaxation area at the front, while the sun deck offers sun loungers for soaking the Maldivian sun

ZEN : BOAT LAYOUT

Attached below is the deck layout of Maldives Legend - Zen.

[Click here to access the PDF version.](#)

Sun Deck



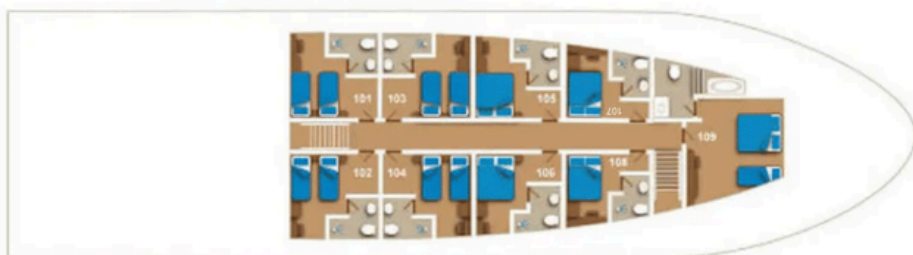
Upper Deck



Main Deck



Cabin Deck (Lower Deck)



ZEN: BOAT GALLERY

Capture the essence of our luxurious Zen boat through a few stunning pictures

[Click here to access the complete gallery.](#)





OUR FLEET: X

Introduction to Legend X



LENGTH: 40 METERS



CABINS: 13



PAX: 26



SPEED: 12 KN

The Maldives Legend X, a luxurious liveaboard, was constructed in 2016, refurbished in 2024, and meticulously crafted by skilled local artisans. This exquisite vessel can host 26 passengers in 13 cabins, all of which are spacious and equipped with modern conveniences like a minibar, safety deposit box, and a generous en suite shower and toilet. The liveaboard features 5 sea-view suites – 2 on the main deck and 3 on the upper deck. Additionally, the lower deck boasts 5 family cabins, each with a double and single bed, and 3 double cabins with queen beds.

SPECIFICATIONS

- **Vessel** - Wooden hull polished with fiberglass coating
- **Built Year** - 2023
- **Propulsion** - Main: Daewoo 600 HP
- **Fuel Capacity** - 12,000 litres
- **Desalinator** - 12 tonnes per day
- **Navigation & Communication** - 36 miles marine radar system, Eco Sounder, Compass, Map, Fish Finder, GPS, CB Radio, Mobile Phones, Internet, Search Light, Binoculars, IDD Telephone.
- **Power** - 2 x 50 KW Generators

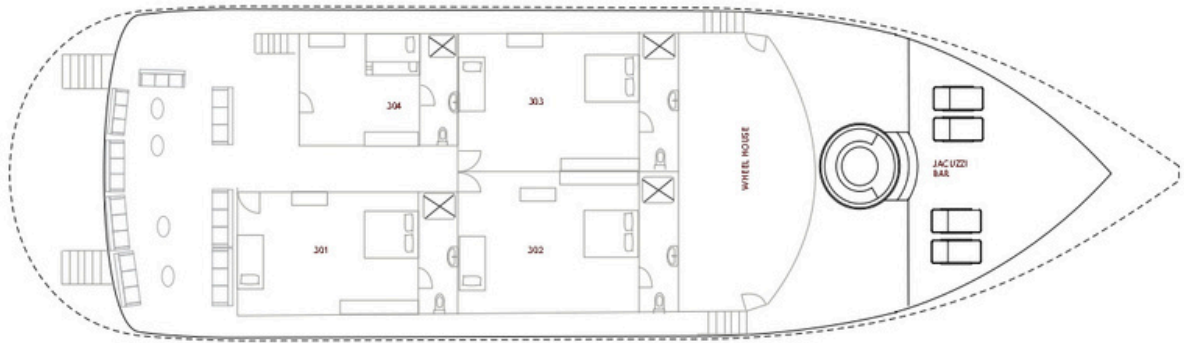
FACILITIES

The motor yacht includes a spacious restaurant, bar, and lounge area furnished with luxurious decor. Outside, there is a large outdoor dining space and relaxation areas at both the front and back of the upper deck. The highest level, known as the sun deck, features sun loungers and sunbeds, as well as a jacuzzi located at the front of the upper deck.

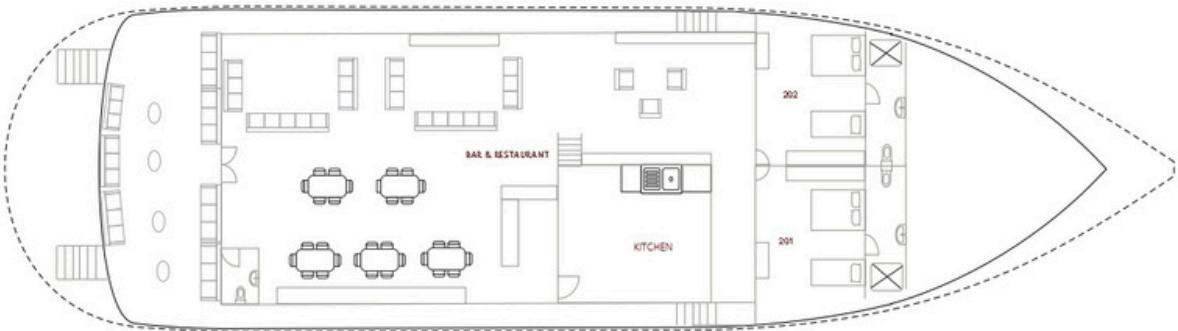
X: BOAT LAYOUT

Attached below is the deck layout of Maldives Legend - X.

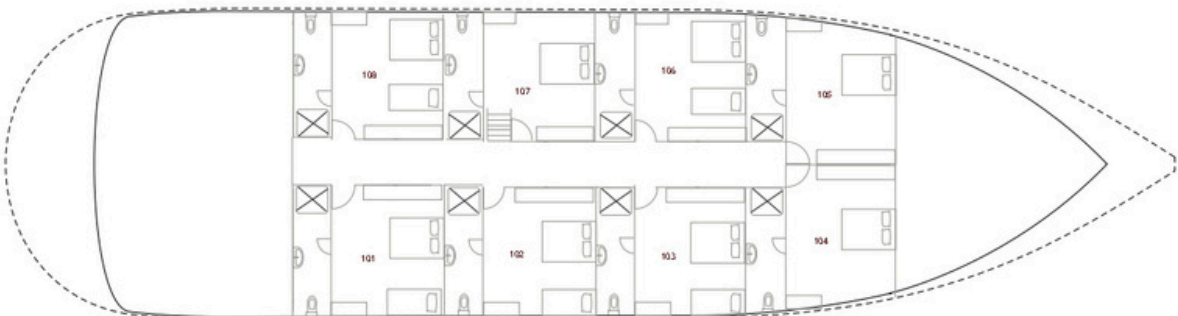
[Click here to access the PDF version.](#)



TOP DECK



MAIN DECK



LOWER DECK

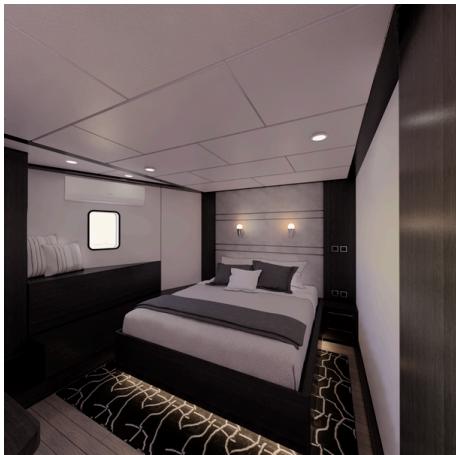
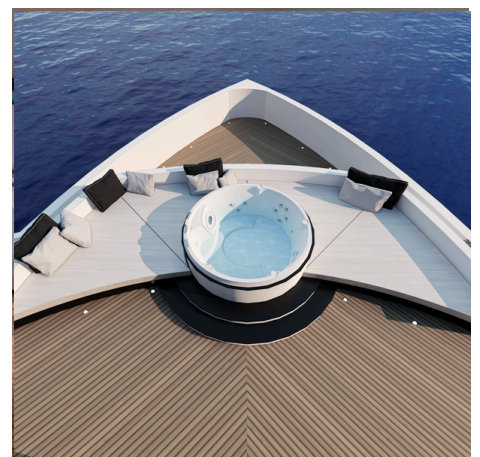


X: BOAT GALLERY

Capture the essence of our magnificent X boat through a few stunning pictures



[Click here to access the complete gallery.](#)



F.A.Q

FREQUENTLY ASKED QUESTIONS

(THE BOAT)

Read below for some of the questions our agents asks commonly.

WHAT IS THE MAXIMUM CAPACITY OF PASSENGERS ALLOWED ON BOARD?

- The maximum capacity for Sea Pleasure is 20 to 23 passengers meanwhile the maximum capacity for Odyssey is 22 to 26 passengers

WHAT IS MALDIVES LEGEND'S STANDARD CHECK-IN AND CHECK-OUT?

- Check-in at **2 p.m.** and check-out at **10 a.m.** (Please contact us to discuss options if your flight is either very early or later)

CAN THE CHEF CATER TO VEGETARIANS, AND ARE THERE ANY MEDICAL OR ALLERGY RESTRICTIONS TO CONSIDER?

- The meals on board are usually buffet style with a variety of local and International dishes to suit everyone. Our culinary team strives to accommodate all dietary restrictions and preferences. Please inform us of any special dietary requirements or allergies at least 7 days prior to the cruise.

DOES THE FLEET PROVIDE WATER BOTTLES ONBOARD?

- No, we are raising awareness on plastic usage and following a plastic-free zone within our liveaboard. We encourage you to bring your own water bottle so you can keep refilling the same bottle and most importantly stay hydrated at all times.

HOW CAN THE GUEST ARRIVE ONBOARD THE MALDIVES LEGEND FLEET?

- Our team will send the fleet's dhoni to the airport to pick up the guests and drop them off on the liveaboard.

WHAT'S THE PROCESS LIKE FOR OUR GUESTS WHO ARRIVE EARLY IN MALDIVES?

We provide the following options for our guests whose arrival times are set earlier than the LOB check-in time;

- Male city tour (Chargeable)
- Arrange a day stay at a city hotel and overnight stays if the guest is arriving a day before the trip. (Chargeable)

F.A.Q

FREQUENTLY ASKED QUESTIONS

(THE BOAT CONT.)

Read below for some of the questions our agents asks commonly.

IS WIFI AVAILABLE ONBOARD?

- Yes. However it's a limited package plus the range can be limited within the liveboard as well. If you are a high-level internet user, we advise that you purchase a local data SIM at Male airport upon arrival.

WHAT ARE SOME OF THE ADDITIONAL AMENITIES TO HIGHLIGHT ONBOARD?

- 3 life jackets available per room. (2 adult/ 1 child size)
- A microwave to heat foods and snacks of your preference.
- Hair dryers are available in all rooms
- Unlimited tea and coffee onboard
- Charging stations and universal plug points in rooms and indoor areas.

HOW MANY TOWELS ARE PROVIDED?

- Our crew will provide you with two towels - a white towel for in-room use (available inside the room) which will be laundered every 3 days and a colored towel for use when diving or outdoor activities which will be laundered everyday.

DOES THE FLEET PROVIDE WATER BOTTLES ONBOARD?

- No, we are raising awareness on plastic usage and following a plastic-free zone within our liveboard. We encourage you to bring your own water bottle so you can keep refilling the same bottle and most importantly stay hydrated at all times.

CAN OUR GUESTS SMOKE OR VAPE ONBOARD?

- Yes, our guests are allowed to smoke or vape on the designated smoking areas.

WHAT'S THE PROCESS LIKE FOR OUR GUESTS WHOSE FLIGHT TIME IS SET LATER ON THE CHECK-OUT DAY?

We provide the following options for our guests whose departure time is set later than the check-out time;

- Male city tour (Chargeable)
- Arrange a day stay at a city hotel and overnight stays if the guest is departing a day after the trip. (Chargeable)
- Water sports in Hulhumale (Chargeable)
- Spa session at Footrest Spa in Hulhumale

F.A.Q

FREQUENTLY ASKED QUESTIONS (GENERAL)

Read below for some of the questions our guests asks commonly.

DO WE OFFER FREE TRANSFERS FROM THE AIRPORT TO THE LIVEABOARD?

- Yes, Maldives Legend arrange transfers depart from the airport to the boat between 13.00 and 13.30 p.m.

IS LIQUOR AND SOFT DRINKS ONBOARD THE LIVEABOARD?

- Yes, both liquor and soft drinks are available for purchase. You can refer to the Bar Menu attached below.

HOW LONG SHOULD I WAIT BEFORE FLYING IF I HAVE BEEN DIVING?

- Most diving schools recommend 24 hours prior to a flight.

WHAT CURRENCY SHOULD I BRING ?

- We accept the following; USD, Euros, Visa, and MasterCard only. Credit cards are charged in USD plus a 4% surcharge. Do make sure you inform your credit card provider that you are coming to the Maldives as we have had credit card companies block transfers made onboard.

GENERAL TRAVEL POINTS

- You must have a passport validity at least six more months after arrival. All Visitors get on arrival 30 days Visa.
- 5 hours ahead of GMT.
- IMUGA registration has to be done 24 hours prior to the flight. <https://travel.immigration.gov.mv/>
- The Maldivian currency is the Rufiyaa.

DO WE OFFER TRANSFERS FROM A HOTEL TO THE LIVEABOARD?

- If you are already in the Maldives before joining your liveaboard, you should make your way to Male (Velana) International Airport for the Maldives Legend transfer. Your hotel will be able to help you with arranging the transfer from the hotel back to the airport. We are happy to assist you until you reach our transfer.

F.A.Q

FREQUENTLY ASKED QUESTIONS (DIVING)

Read below for some of the questions our guests asks commonly.

HOW MANY DIVES PER DAY WILL I BE ABLE TO DO?

- 17 dives offered per week (2-3 dives per day) You must ensure that you leave a minimum of 24 hours between your last dive and your flight departure (or going to any altitude).

CAN NON-DIVERS BOOK THE LIVEBOARD FOR SNORKELING ?

- Snorkeling can be done when an Instructor/Guide to observe or unless the snorkeller is accompanied in the water by a crew member onboard.

WHAT DO I NEED TO BRING IF I WANT TO DIVE?

- If you are a certified diver you must bring your diving license and your log book as well.
- All divers need to sign a self-declaration form.

WHAT IS THE MAXIMUM DEPTH YOU DIVE TO?

- We strictly follow the Maldivian dive regulations, which limit dives to a maximum of 30 meters without exception. This limit applies to all divers even on advanced level and training in deep diving.

DO I NEED A MINIMUM AMOUNT OF DIVES IF I WANT TO DIVE WITH MALDIVES LEGEND?

- This is not required. We have a team of skilled dive professionals who are accustomed to guiding groups with varying abilities and experience levels. The groups will be divided based on their skills to ensure that all guests have the most enjoyable experience possible.

CAN I TAKE A DIVING COURSE ON BOARD ?

- We offer a range of PADI courses including; Discover Scuba Diving, and Advanced Open Water on all boats, please request for more details. Courses are subject to availability and itinerary and do not include course materials and certification fees. For students under the age of 18, course paperwork needs to be signed by a parent or guardian.

F.A.Q

FREQUENTLY ASKED QUESTIONS

(DIVING CONT.)

Read below for some of the questions our guests asks commonly.

WHAT IS THE NUMBER OF DIVE GUIDES AVAILABLE ON BOARD?

- On each liveaboard, there are usually 3 dive guides.

WHAT IS THE MODE OF DIVING

- Guests will dive from the Diving Dhoni, a boat entirely dedicated to diving activities, which always accompany the main liveaboard and provides tanks, belts, and weights.

WHAT IS THE DIVE SCHEDULE, INCLUDING THE TIMING OF THE FIRST AND LAST DIVES, AND NIGHT DIVES?

- The diving schedule basically starts with the first dive at 6-7 am. Before the dive, a light snack is served. After the dive, a breakfast buffet is provided, followed by a relaxing period or activities such as diving lessons. The second dive usually takes place between 11 am - 12 pm, followed by lunch. After lunch, guests have some time to rest before the third dive, which usually takes place between 3-4 pm. After the third dive, the program varies, including activities such as a happy hour on a sandbank or desert island, a walk on a local island, or biology talks with our experts and dive guides. The activities depend on the schedule of the day.

DOES MALDIVES LEGEND LOOK INTO MY MEDICAL CONDITIONS?

- If you have any pre-existing medical conditions and/or will be taking any medication while on holiday, we will need a medical certificate from a doctor, which states that you are fit to dive.

WHAT IS THE POLICY ON SOLO, BUDDY, OR GROUP DIVING?

- The liveaboard boat does not permit solo diving and instead provides experienced dive guides who are familiar with the dive sites and currents. They always try to organize group dives and maintain a convenient ratio with at least 3 dive guides on board. The liveaboard is flexible underwater and aims to meet the expectations and needs of all guests. However, they expect guests to behave reasonably towards marine life and other divers.

EQUIPMENT RENTAL - PRE ORDER RATES

Below stated are the per-day equipment rental rates.

- All rates are subject to change without notice.
- All taxes have been applied to the above rates.
- The full equipment list includes a Mask, Snorkel, Fins, BCD, Regulator, Dive Computer, and a Wetsuit.

Equipment	\$	Lost or Damaged
Mask*	\$7	\$95
Snorkel*	\$7	\$70
Fins*	\$7	\$150
BCD*	\$12	\$450
Regulator*	\$12	\$450
Dive Computer*	\$12	\$400
Torch	\$8	\$300
15-litre tank	\$13	\$400
11-litre tank	\$8	\$400
Wet Suit*	\$10	\$200
SMB	Free	\$70
Full Equipment	\$40	-

EXTRA SERVICES OFFERED

A list of the additional services offered by Maldives Legend.

MALE' CITY TOURS

CITY HOTEL STAYS

DAY VISIT AND STAY PACKAGES OFFERED AT RESORTS.

SPA SERVICES FROM FOOTREST SPA IN HULHUMALE (MENU ATTACHED BELOW)

STAINLESS STEEL WATER BOTTLE AVAILABLE FOR PURCHASE

MALDIVES LEGEND T-SHIRTS AVAILABLE FOR PURCHASE

DIVE INSURANCE CAN BE PURCHASED ONBOARD

WATER SPORTS IN HULHUMALE